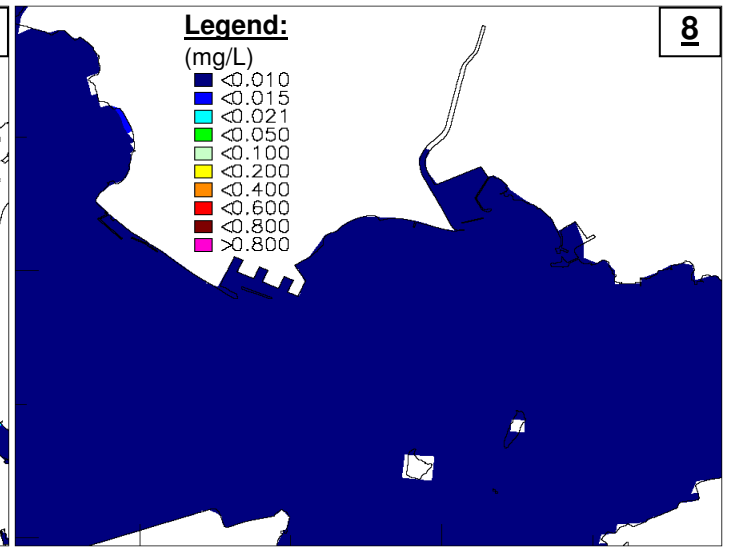
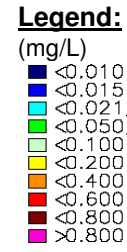
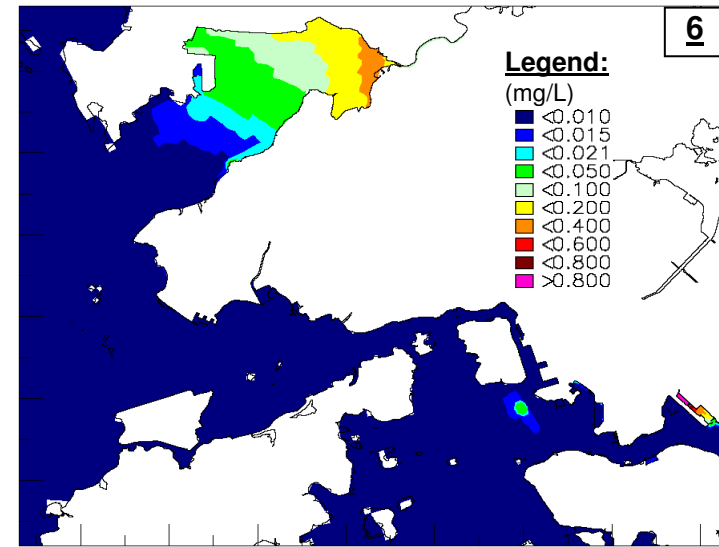
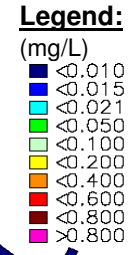
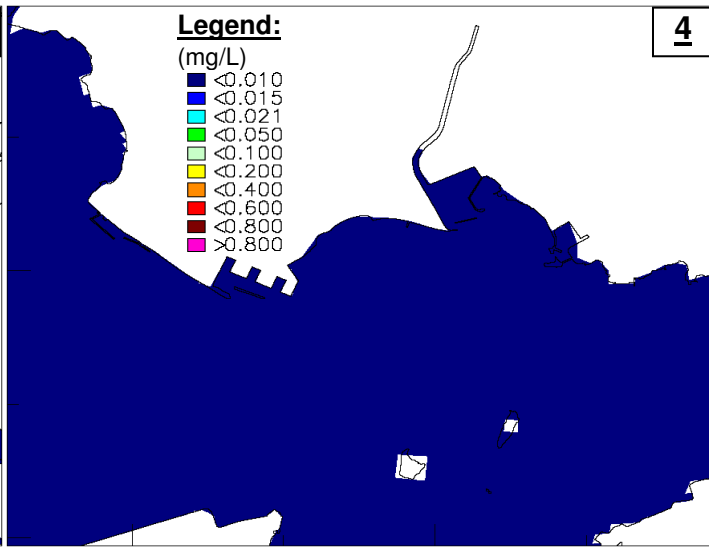
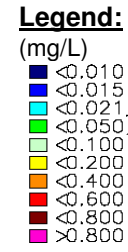
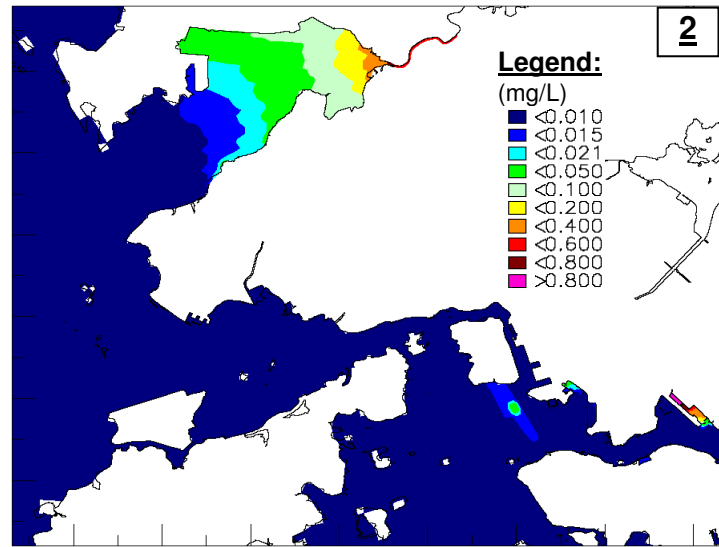


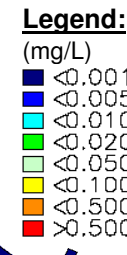
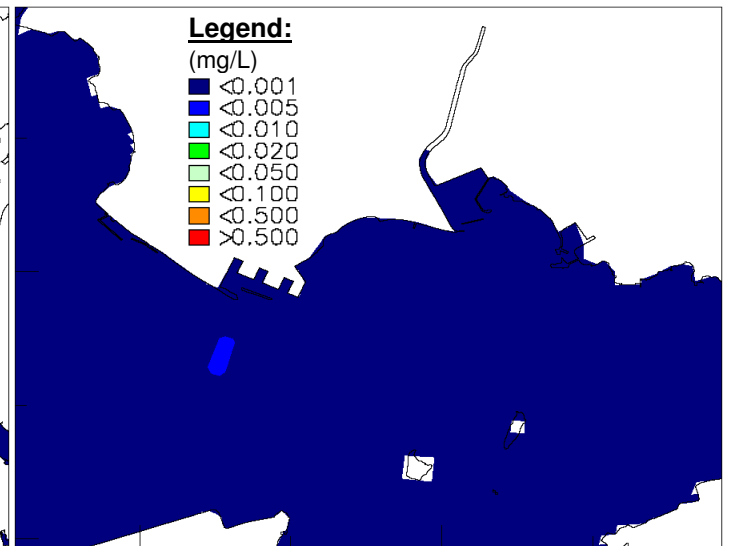
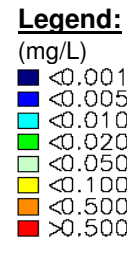
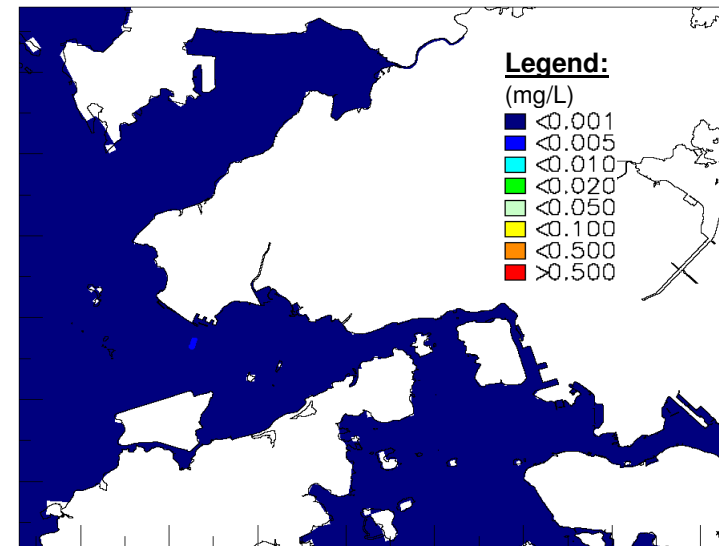
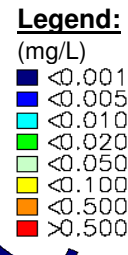
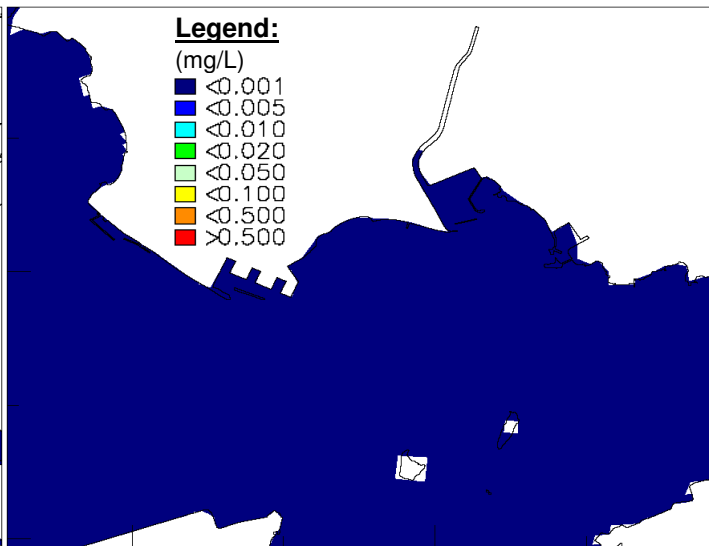
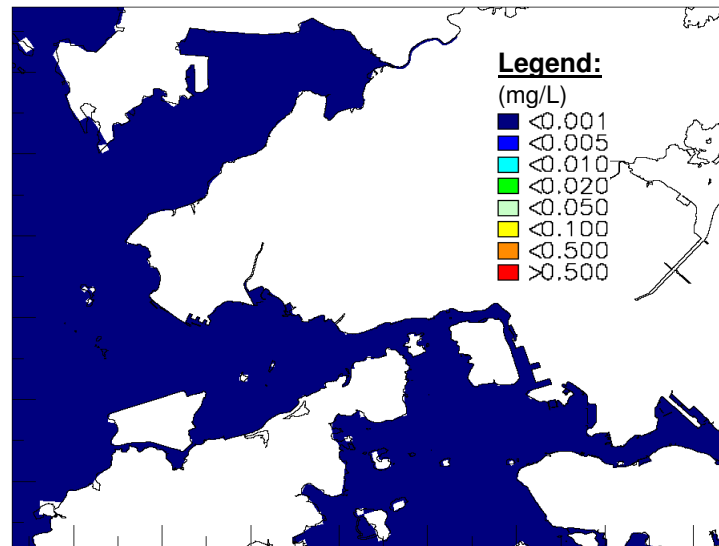
Scenario 1b (Assumed TN Level in the PPSTW Effluent: 48mg/L)

Scenario 1b (Assumed TN Level in the PPSTW Effluent: 48mg/L)



Scenario 1c (Assumed TN Level in the PPSTW Effluent: 28mg/L)

Scenario 1c (Assumed TN Level in the PPSTW Effluent: 28mg/L)



Absolute Difference between Plot 1 & Plot 2
(Overview)

Absolute Difference between Plot 3 & Plot 4
(Close Up)

Absolute Difference between Plot 5 & Plot 6
(Overview)

Absolute Difference between Plot 7 & Plot 8
(Close Up)

2012- With the Project - Dry Season

2012- With the Project - Wet Season

SCALE	N.T.S.	DATE	SEP 2006
CHECK	AKYC	DRAWN	LHKJ
JOB NO.	A06205	DRAWING No.	Figure 4.31
		Rev	-